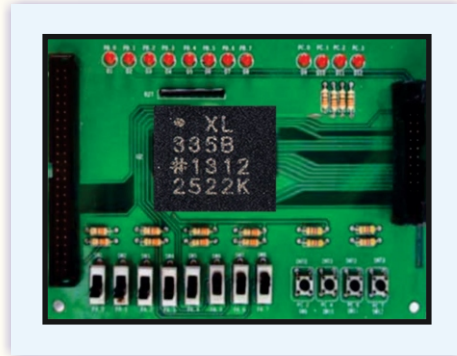




MEMS LAB TRAINER

MODEL - MEMS100

This kit has been designed with a view to provide practical and experimental Knowledge of MEMS Lab Trainer.



FEATURES

1. The output for that axis outputs half the supply voltage, or about 1.65V.
2. Operates on 2.2-3.6VDC, and uses very little current (500uA).
3. It has three analog outputs, one for each axis.
4. Acceleration on each axis generates a voltage from 0 to approximately 3.3V.

APPLICATION

1. The laptops to detect when the computer's suddenly moved or tipped, so the hard drive can be locked up during movement.
2. Used in cameras, to control image stabilization functions.
3. Used in pedometers, gait meters, and other exercise and physical therapy devices.
4. Used in gaming controls to generate tilt data.
5. Used in automobiles, to control airbag release when there's a sudden stop.

SPECIFICATIONS

1. On board 3-pin header
2. Facility to interface microcontroller devices
3. Sensor device: MMA 7260Q

Accessories

1. MEMS Sensor kit
2. 3-pin female header
3. User manual

Sigma Trainers and Kits
E-113, Jai Ambe Nagar,
Near Udgam School,
Thaltej,
AHMEDABAD - 380054.
INDIA.

Phone(O): +91-79-26852427/ 26850829
Phone(F): +91-79-26767512/ 26767648
Fax : +91-79-26840290/ 26840290
Mobile : +91-9824001168
Email : sales@sigmatrainers.com
: sigmatrainers@sify.com
Web : www.sigmatrainers.com

Dealer:-